



Living Room
11' 6" x 11' 9"

Bedroom
10' 0" x 11' 9"

Kitchen
7' x 6' 9"

Closet

Closet

Closet

Foyer

Bath Room



Bedroom
11' 1" x 12' 6"

Living Room
11' 1" x 14' 9"

Closet

Closet

Bath

Dining Room
11' 1" x 8' 3"

Kitchen
9' 6" x 8' 6"

Foyer

Closet

Closet



Living/Bedroom
12' 0" x 15' 9"

Bath

Kitchenette

Closet







Bedroom
11' 4" x 15' 5"

Closet

Bathroom
8' 2" x 8' 8"

Bedroom
10' x 13'

Closet

Closet

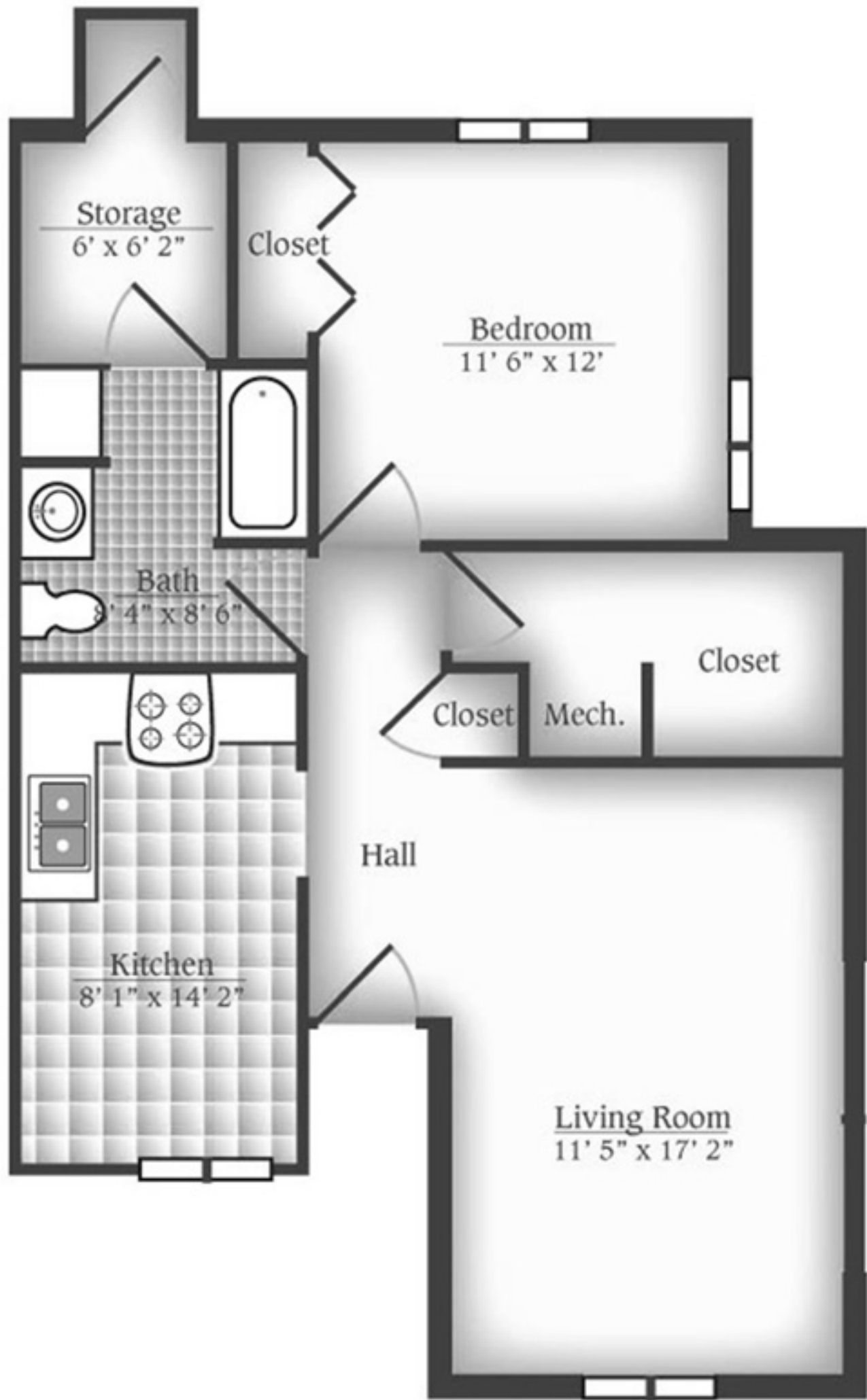
Utility

Kitchen
11' 5" x 12' 6"

Closet

Garage
14' 6" x 26' 2"

Living Room
13' 4" x 17'





Storage
6' x 6' 2"

Closet

Bedroom
9' 8" x 11' 6"

Bedroom
11' 6" x 12'

Bath
8' 4" x 8' 6"

Hall

Closet

Closet

Mech.

Closet

Hall

Kitchen
8' 1" x 14' 2"

Living Room
11' 5" x 17' 2"